

HSE ROHS

SPECIFICATIONS

Rated Current: 1.0AMP
 Contact Resistance: 1Ω Max
 Withstand Voltage: 500V AC/Min
 Insulation Resistance: 100MΩ Min
 Voltage Rating: 250V AD,DC
 Operation Temperature: -40°c to +105°c

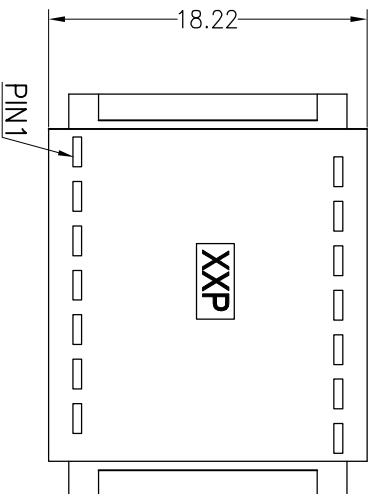
Contact Material: Brass

Contact Plating: Au or Sn Over Ni

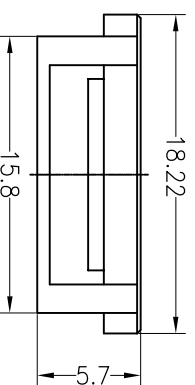
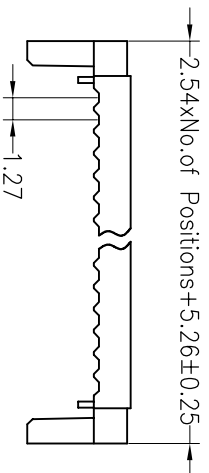
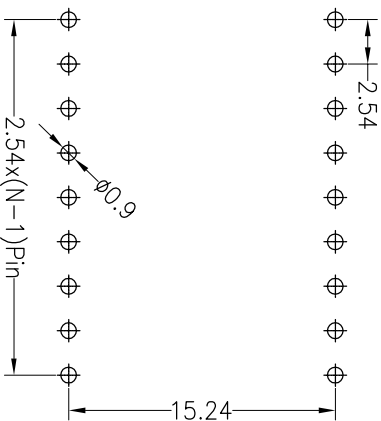
Insulator Material: Polyester(UL94V-0)

Standard: PBT

Max. Processing Temp: 180°C for 30-60 seconds
 (200°C for 10 seconds)



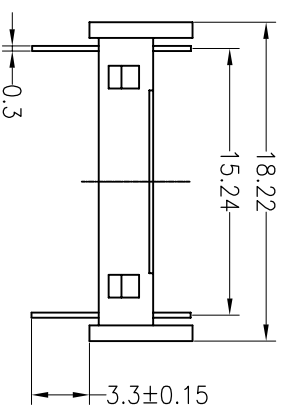
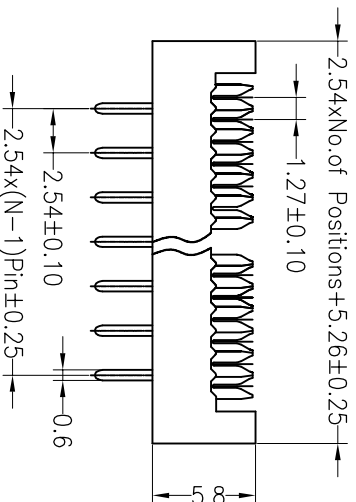
Recommended P.C.B Layout(Top Side)
 (PCB BOARD TOLERANCE±0.05)



Ordering Information

5460 - XX B XX X 01

No. of Pins: 08~40P
 Connector Type: B=Brass
 Contact Plating: G0:Gold Flash, G1:3U"Gold, G2:5U"Gold, G3:10U"Gold, G4:15U"Gold, G5:30U"Gold, S0:Gold Flash/Ni
 Color Type: B=Black, G=Grey



OPERATION		DRAW		SCALE		FIT		PART NO.	
X.X	±0.30	YYuSheng	19.01.15	UNIT	mm	A4	1/1	5460XXBXXXX01	
X.XX	±0.20	CHECK		SIZE					
X.XXX	±0.10			SHEET					
Angle	±3°	APPROVE		PROJ.					
DIM	TOL								
REV	DATE	MODIFICATION DESCRIPTION	CHANGE					TITLE:	
A0	2019.01.15	NEW DRAWING						2.54*15.24 DIP Plug	
1									

JILIN 深圳市锦凌电子有限公司
 SHENZHEN JINLING ELECTRONIC CO.,LTD
 Tel: 86-755-2997-5806/5802 Fax: 86-755-2997-5892